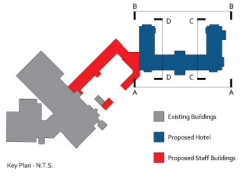


© Wildblood Macdonald Architects Ltd. 2018. All Rights Reserved. This drawing is the property of Wildblood Macdonald Architects Ltd. and is not to be reproduced, stored in a retrieval system, or transmitted in any form or by any means, electronic, mechanical, photocopying, recording, or by any information storage and retrieval system, without the prior written permission of Wildblood Macdonald Architects Ltd.



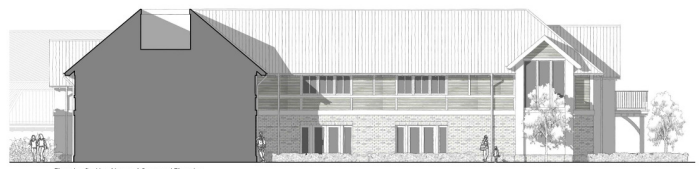
Elevation B - Hotel Rear Elevation



Elevation A - Hotel Front Elevation



Elevation C - Hotel Internal Courtyard Elevation



Elevation D - Hotel Internal Courtyard Elevation

wildblood macdonald
 Parkhill Studio, Parkhill, Waterloo Road
 Waterloo, LS1 3JG
 T: 01753 593930 F: 01753 593939
 www.wildblood-macdonald.com

DATE: VALUED 03/04/2018

THIS COPY HAS BEEN MADE BY OR WITH THE AUTHORITY OF WILDWOOD MACDONALD ARCHITECTS LIMITED PURSUANT TO SECTION 87 OF THE COPYRIGHT DESIGN AND PATENTS ACT 1988. UNLESS THAT ACT PROVIDES A RELEVANT EXCEPTION TO COPYRIGHT, THIS COPY MAY NOT BE REPRODUCED WITHOUT THE PRIOR PERMISSION OF THE COPYRIGHT OWNER.

Client	Project Description	No. Date
Sandburn York Ltd.	Planning for Proposed Elevations	1 and 4
Client	2461 (PL)14	1
Project	New Hotel & Staff Accommodation Sandburn Hall Flaxton	1
Scale/Date	March 2018 PLANNING	1/8 5/1